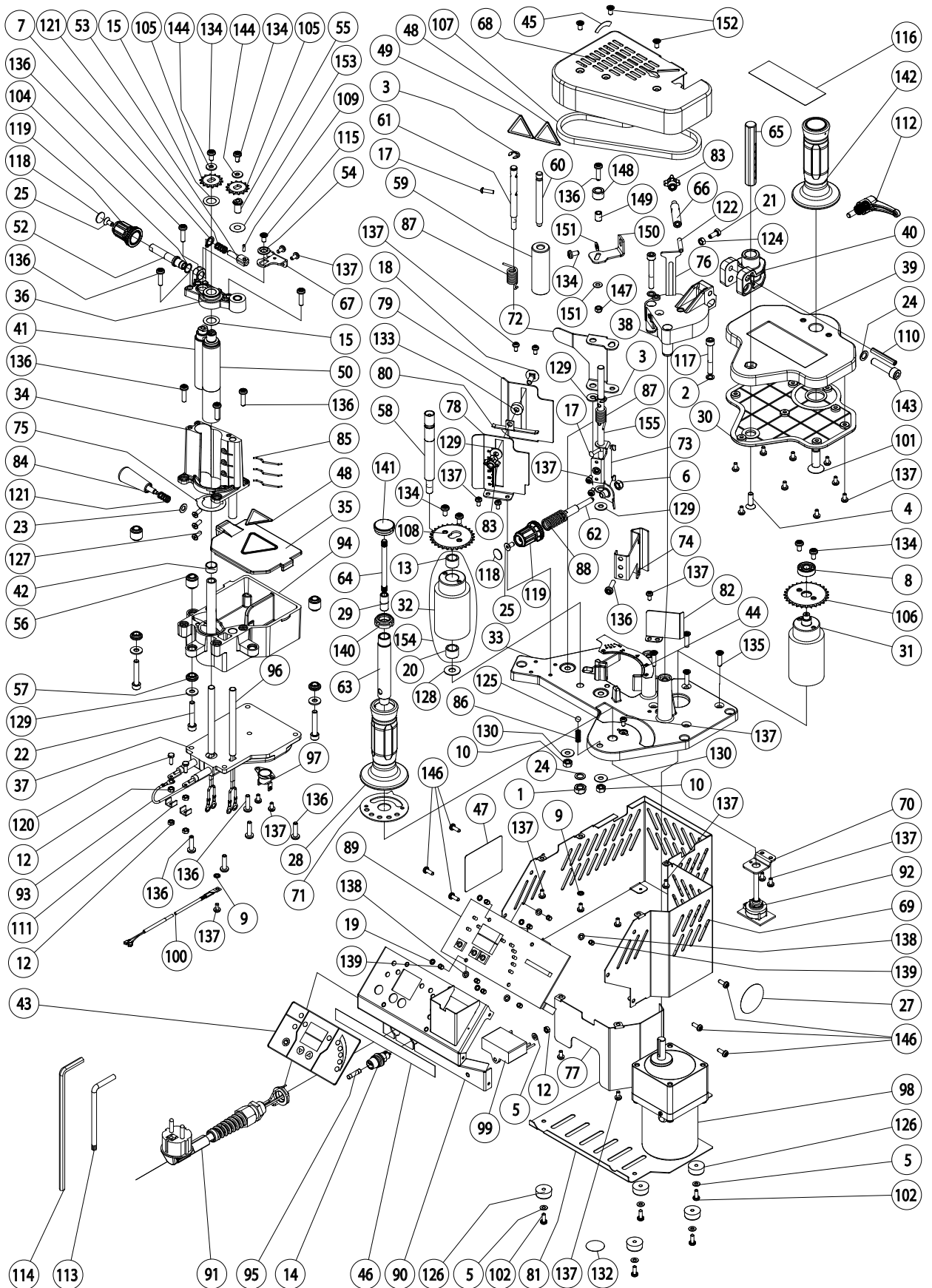


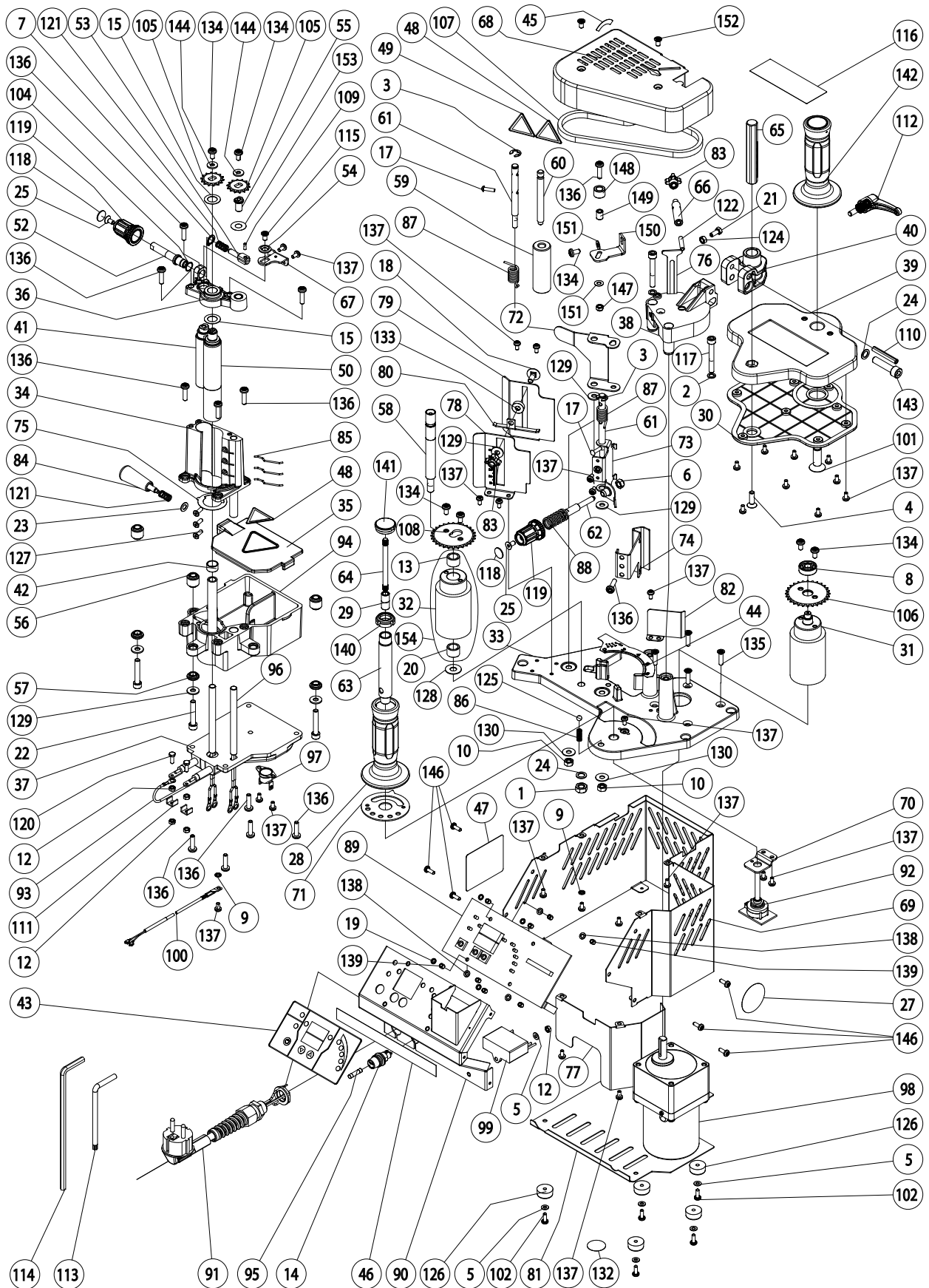


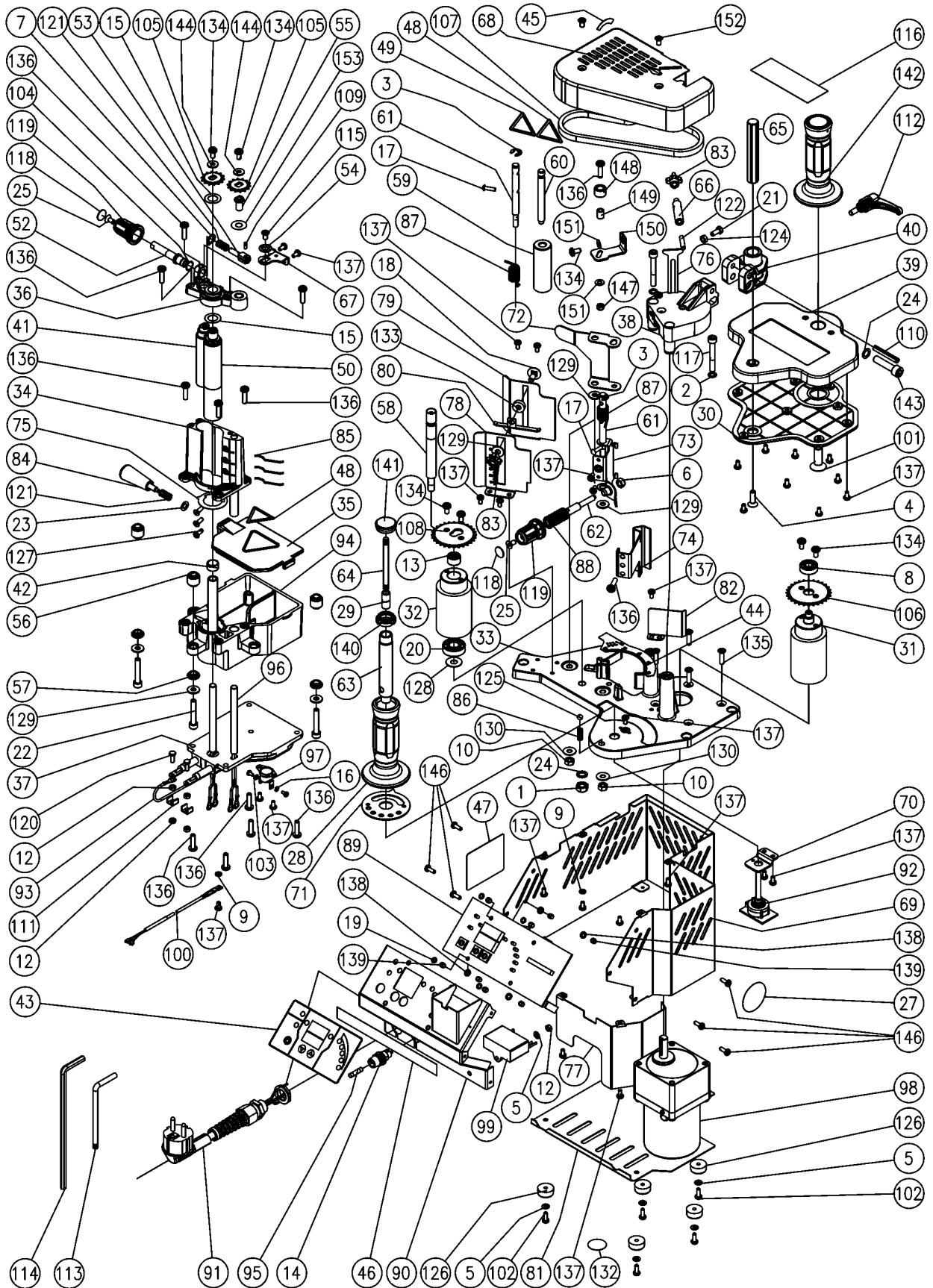
Technical information
Explosion drawing and parts list

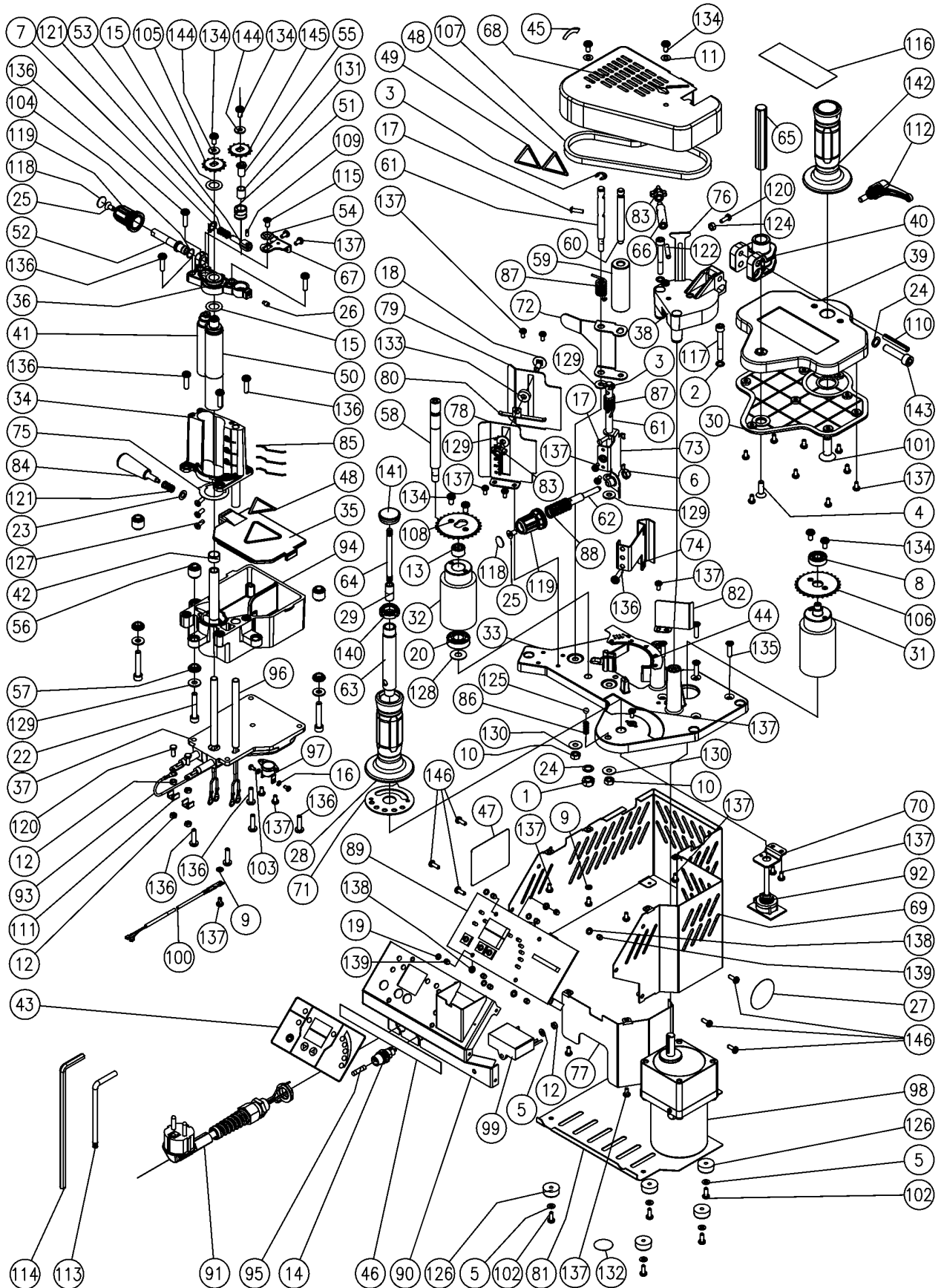
PEB250 edgebander (Ref. 5000800)
(*) Parts not mounted in the current version

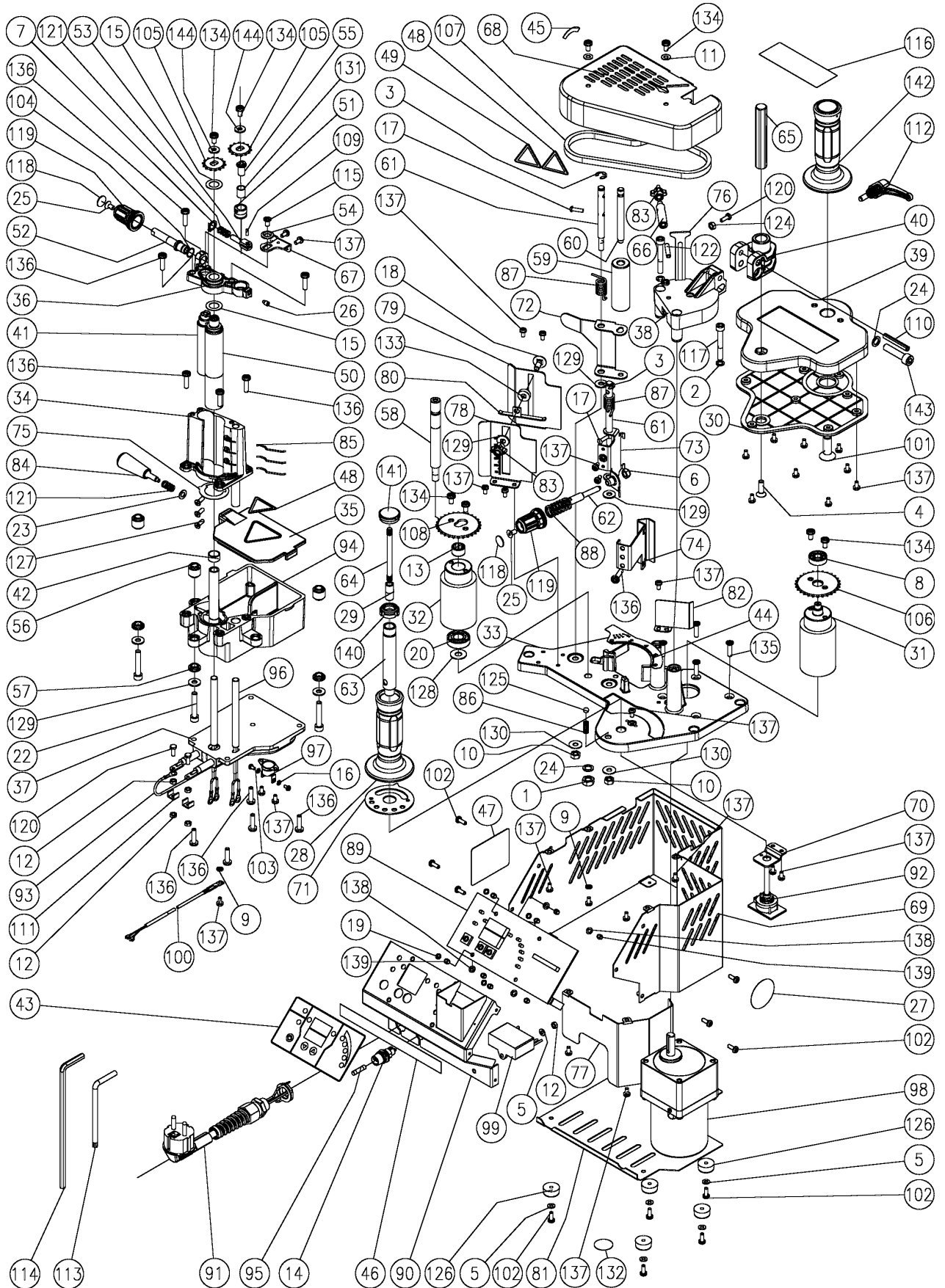
Pos.	Code	Vrs.	Serie	Item	Pos.	Code	Vrs.	Serie	Item
1	1185004			HEX. NUT M.8 10K	63	5022652			HANDLE SHAFT
2	1383003			WASHER AET D.6.4	64	5022653			ROD
3	1588017			RETAINING RING N-7	65	5022665			SHAFT
4	1673018			HEX. SOCKET FLAT HD. SCREW M.6X20	66	5022666			HANDLE EXTENSION
5	1680026			WASHER D.4.3 DIN125	67	5023862			STOPPER
6	1685017			SELF-LOCKING HEX. NUT M.6	68	5023970	C0	12687	UPPER COVER (V2)
7	1688103			RING SHAFT D.10	* 68 -	5023865			UPPER COVER
8	1910002			BALL BEARING 608-ZZ	69	5023872			PROTECTION
9	1981001			TOOTHED WASHER D.4.3	70	5023873			SUPPORT
10	2085002			HEX. NUT M.6	71	5023874			GAUGE DISC
* 11	2280004			WASHER D.5.2X11.1X0.7	72	5023875			PRESSER ROLLER SUPPORT
12	2385005			HEX. NUT M.4	73	5023876			TAPE GUIDE
13	3812002	D1	12894	SELF LUBRICATED BEARING A-12X17X12	74	5023877			STOPPER
* 13 -	3011008			NEADLE BEARING HK 1210	75	5023879			LIMITER
14	5046447			FUSE HOLDER	76	5023880			EXIT TAPE GUIDE
15	3380038			WASHER D.12.1X20X0.5	77	5023881			LOWER PROTECTOR
* 16	3581004			TOOTHED WASHER D.3	78	5023882			RIGHT INFEEED GUIDE
17	3589032			RIVET D.3.9X14	79	5023883			LEFT INFEEED GUIDE
18	3774011			CUP SQUARE NECK BOLT M.6X15	80	5023884			SLIDE
19	3883002			WASHER AET D.4.3	81	5023886			LOWER COVER
* 20	3812002	D1	12894	SELF LUBRICATED BEARING A-12X17X12	82	5023909			SPACER
* 20 -	4010005			BALL BEARING 6001 2RS	83	5025149			KNOB
21	2571042			SCREW M.5X12	84	5025150			GLUE POT COVER KNOB
22	4375066			HEX. SOCKET HD. CAP SCREW M.6X35	85	5026220			SPRING
23	4380014			WASHER D.6.3X11.8X0.8	86	5026221			SPRING D.6
24	4383008			WASHER AET D.8.4	87	5026222			SPRING
25	4475024			HEX. SOCKET FLAT HD. SCREW M.5X10	88	5026223			SPRING
* 26	4475051			HEX. SOCKET SET SCREW M.5X8	89	5046410			ELECTRONIC CIRCUIT
27	4919259			LABEL	89 -	5046411			ELECTRONIC CIRCUIT (120 V)
28	5002771			HANDLE	90	5046421			FRONTAL PART ASS'Y
29	5002772			SELECTOR JOINT	91	5046623	D0	12829	CORD ASS'Y
30	5002775			BASE	91 -	5046624	D0	12829	CORD ASS'Y 120 V
31	5004287			MOTORIZED ROLLER	* 91 -	5046445			CONNECTION
32	5004302	D1	12894	ROLLER (V2)	* 91 -	5046446			CONNECTION (120 V)
* 32 -	5004288			ROLLER	92	5046424			CIRCUIT
33	5006603			BASE	93	5046625	D0	12829	THERMOSTAT CONNECTION (V2)
34	5006606			BODY	* 93 -	5046491			THERMOSTAT CONNECTION
35	5006607			GLUE POT COVER	94	5046529			GLUE POT ASS'Y
36	5046606	C0	12687	UPPER COVER WITH BUSHINGS (V2)	95	5068325			FUSE 4A (230 V)
* 36 -	5046541			UPPER COVER	95 -	5068326			FUSE 8A (120 V)
37	5006611			HEATING BASE	96	5068517			HEATING ELEMENT D. 8X100
37 -	5006622			HEATING BASE (110 V)	96 -	5068518			HEATING ELEMENT D. 8X100 (120 V)
38	5006614			SLIDING BASE SUPPORT	97	5068572	D0	12829	THERMOSTAT (V2)
39	5006615			SLIDING BASE	* 97 -	5046627			THERMOSTAT ASS'Y
40	5006617			HINGE	98	5046443			MOTOR ASS'Y
41	5006633			DISPENSER	98 -	5046444			MOTOR ASS'Y (120 V)
42	5012070			BUSHING 12X14X8	99	5069087			CAPACITOR
43	5019621			MAIN BOARD LABEL	99 -	5069088			CAPACITOR (120 V)
44	5019622			LABEL	100	5069089			THERMAL SWITCH
45	5019623			LABEL	101	5073050			SCREW M.10X30 DIN 7991
46	5019624			MODEL LABEL PEB250	102	5078032			SCREW 4X12 TORX
47	5019627			WARNING LABEL	*103	5078033			SCREW M.3X6 TORX
48	5019629			WARNING LABEL	104	5083027			WASHER D.10
49	5019630			WARNING LABEL	105	5087153			DRIVING PINION
50	5022636			GLUING ROLLER	106	5087155			GEAR
* 51	5022638			ECCENTRIC	107	5087156			CHAIN 6X2.8 PITCH 72
52	5022640			GLUE ADJUSTMENT SHAFT	108	5087157			GEAR
53	5022641			FORK	109	5088166			PIN D.3X8
54	5022642			WASHER	110	5088167			PIN D.6X40
55	5022643			SHAFT	111	5099640			BRACKET
56	5022644			BUSHING	112	5099642			HANDLE
57	5022645			WASHER	113	5099663			TORX KEY TX-25
58	5022693	D1	12894	ROLLER SHAFT (V2)	114	5099664			ALLEN KEY 6 mm
* 58 -	5022646			ROLLER SHAFT	115	5578031			SCREW M5X10 TORX
59	5022647			PRESSER ROLLER	116	5819234			LABEL
60	5022648			ROLLER SHAFT	117	5875101			SCREW M.6X45
61	5022650			SHAFT	118	6002782			SCREW COVER
62	5022651			ADJUSTING SHAFT	119	6045661			FINE ADJUSTMENT BUTTON











ESQUEMA ELÉCTRICO PEB250
PEB250 ELECTRICAL DIAGRAM

